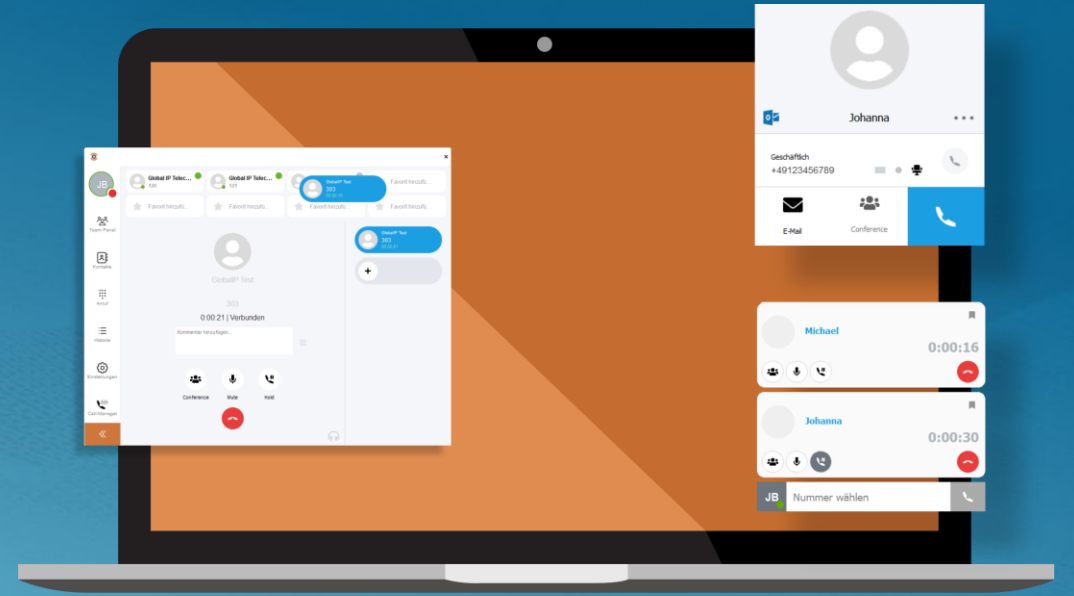


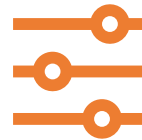
TAPI



**What is
TAPI?**



**Single
TAPI Line**



**Server
operation
Multiline**

What is TAPI?

- **TAPI** was introduced by Microsoft and Intel in 1993 and **has been a hot topic** since its introduction in 1995.
- Originally, TAPI was mainly used to control telephone telephone devices that were connected to a telephone system in such a way that TAPI communicated exclusively with the telephone system. The telephone terminal was controlled by the system, or system solutions (e.g. ACD) sent data via TAPI to a PC for remote control, e.g. call acceptance, ending, forwarding, etc: Call acceptance, ending, forwarding, etc.
- TAPI primarily **serves as an interface** between office applications and telephone terminals **in order to set up telephone calls or to carry out reverse searches with an incoming call number.**



What is TAPI?

- TAPI is a **Windows telephony service which, by means of a driver (TSP)**, communicates with a device (telephone system, telephone, etc.) and **communicates**. TAPI clients (office software) connect via the telephony service and receive this data.
- The Telephony Application Programming Interface **is with** the help of our **TSP (Telephony Service Provider) integrated**.
- The TSP service **works "locally"** on the operating system **or optionally "remotely" on a server** (e.g. terminal server). **LINUX softphone versions can also use TAPI** on a THIN client via TAPI server.



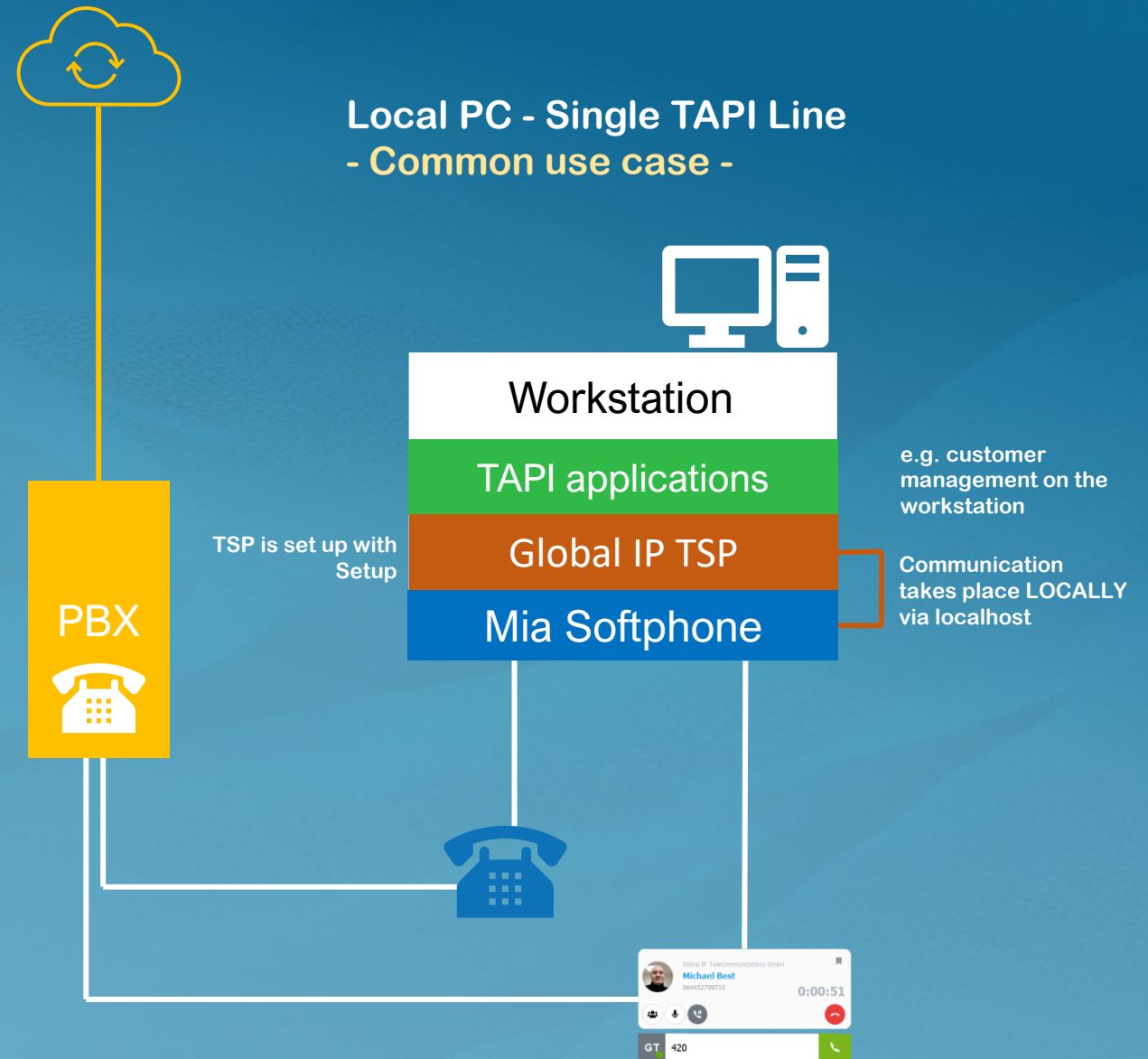
To be able to use TAPI

must be installed on the workstation used or on an accessible Windows server (e.g. terminal server).

TAPI TSP provider

must be installed.

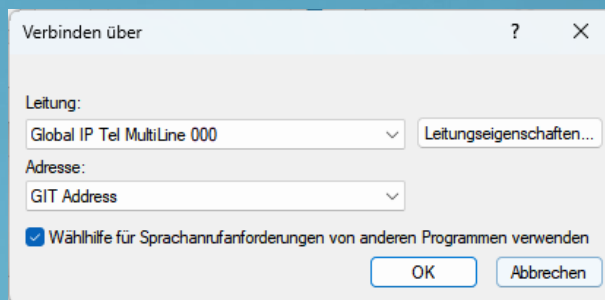
The TSP connects the application via Windows telephony service with the TAPI application (office software) and the Mia Softphone.



TAPI Local PC - Single TAPI Line

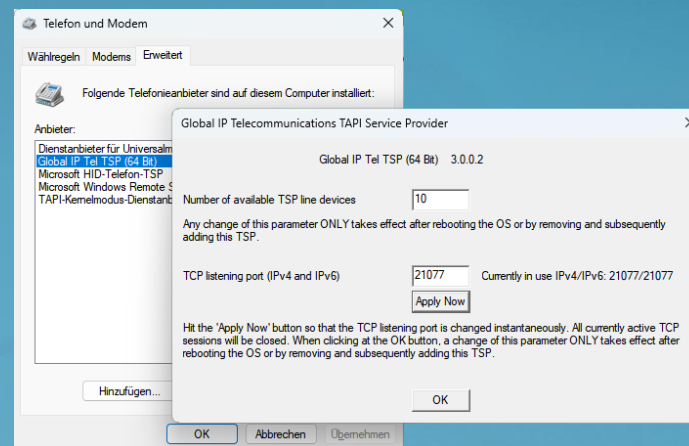
The installation of Mia on a **workstation does NOT require AN ADAPTATION of the TSP provider or in the softphone** if the TAPI application is addressed on the same computer (**ZERO TOUCH**) !

TAPI Client (CRM, ERP)



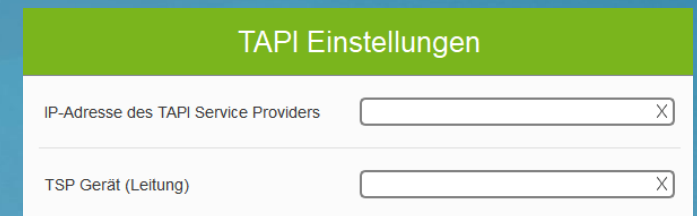
Global IP Tel Multiline 000" is automatically set in the TAPI application.
If not, please select it. "0" is always "Standard" and local communication line.

TAPI Client (CRM, ERP)



DO NOT MAKE ANY CHANGES !

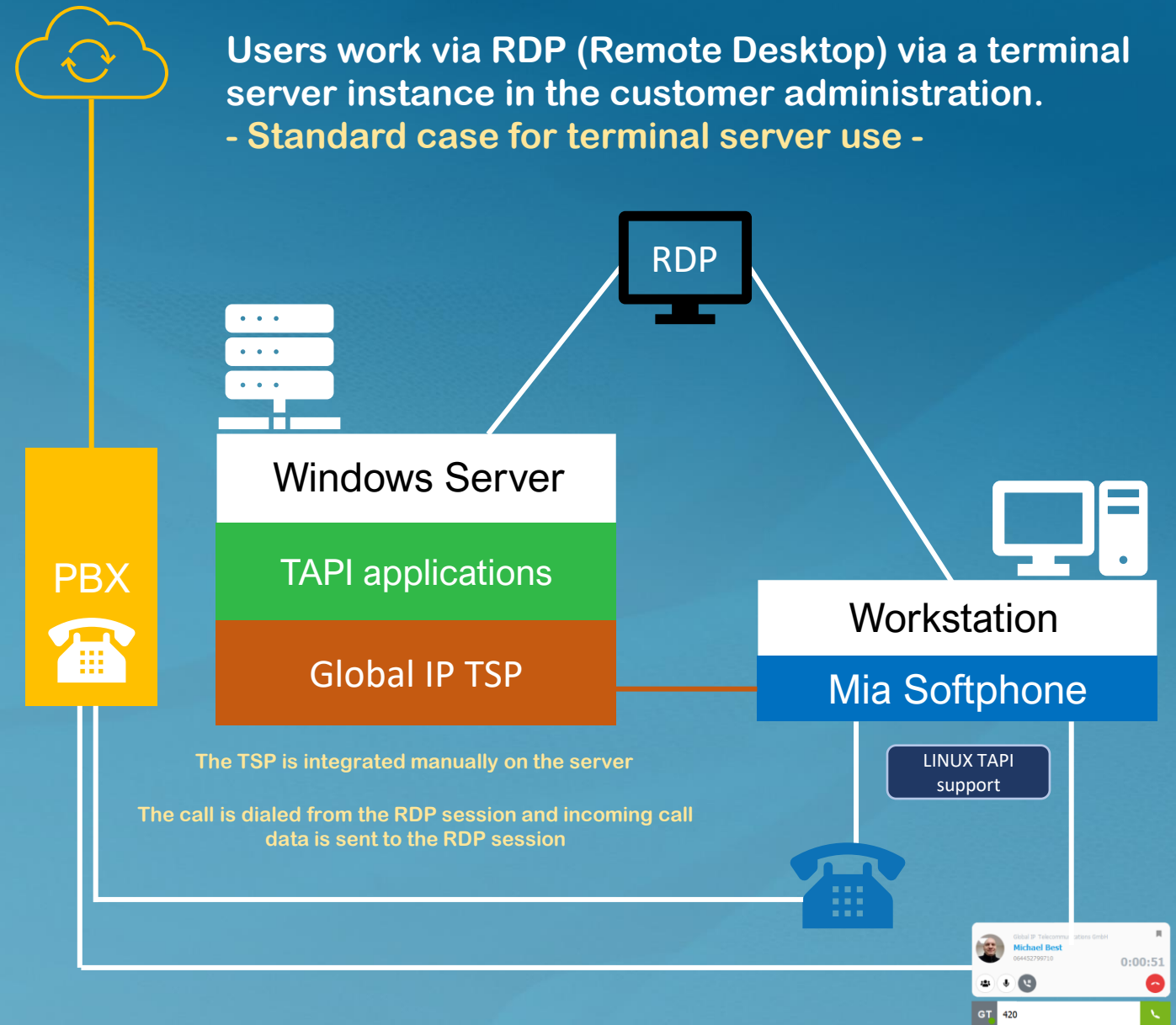
MIA Softphone



DO NOT MAKE ANY CHANGES !

TAPI server operation - Multiline

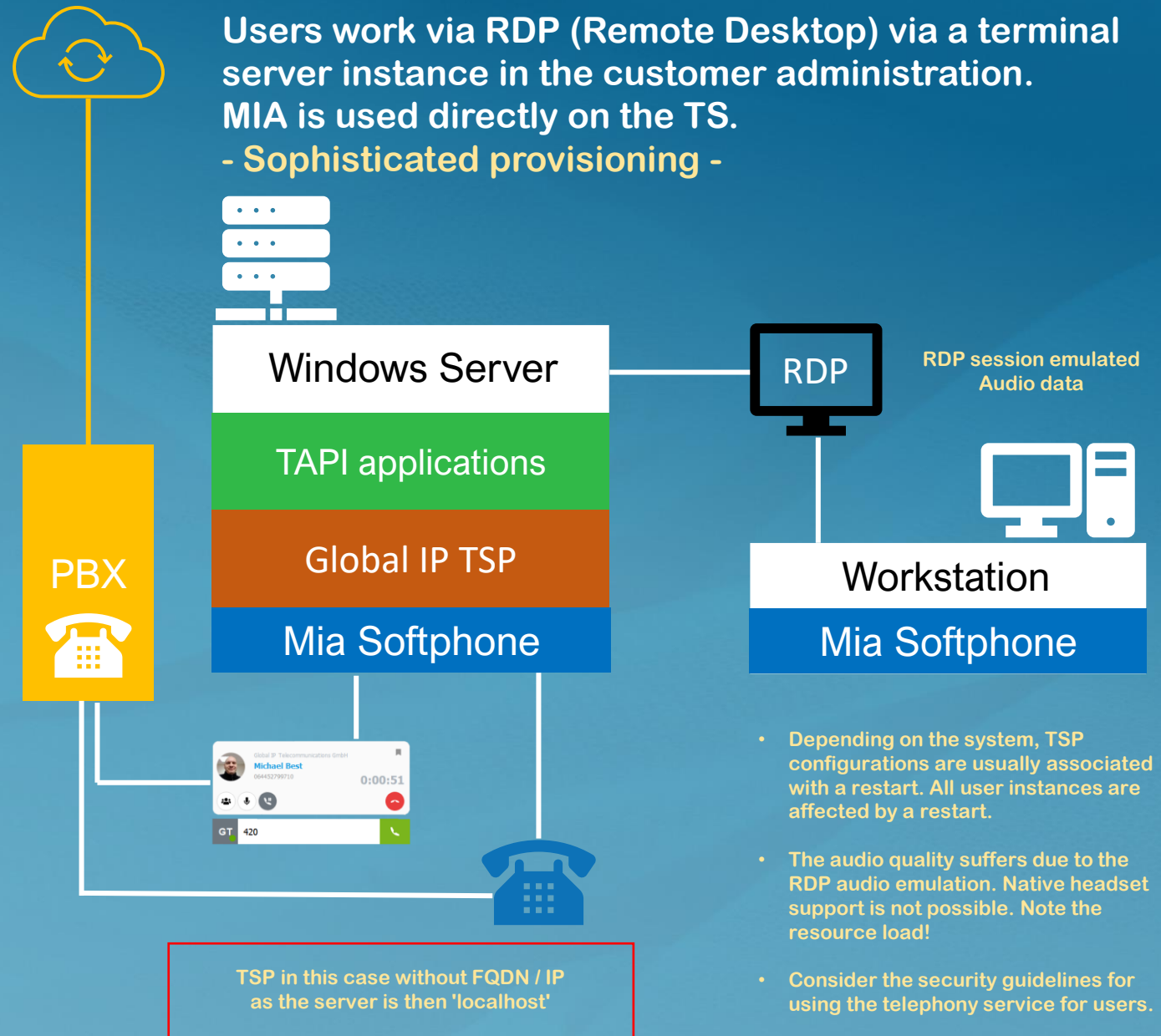
The same TSP provider is used for server operation as for the workstation. There are no functional differences. The connection is only established via TCP by storing an FQDN (Full Qualified Domain) or IP address.



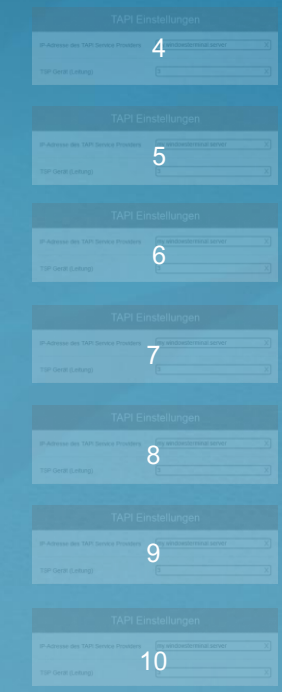
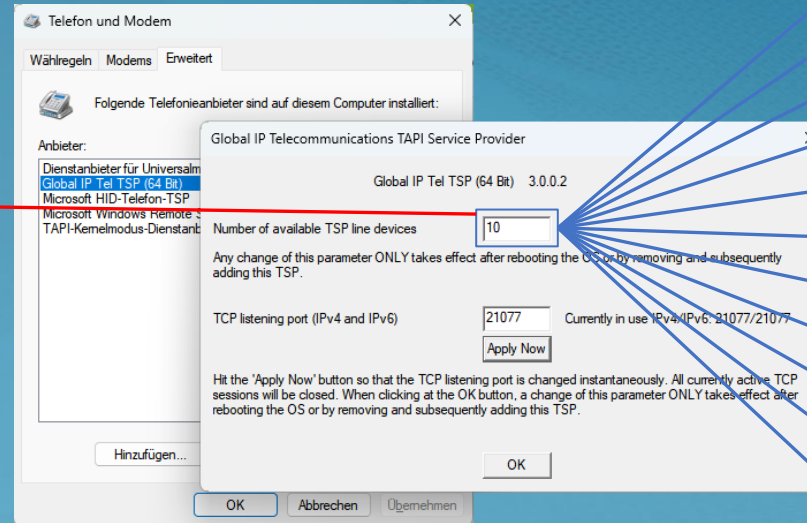
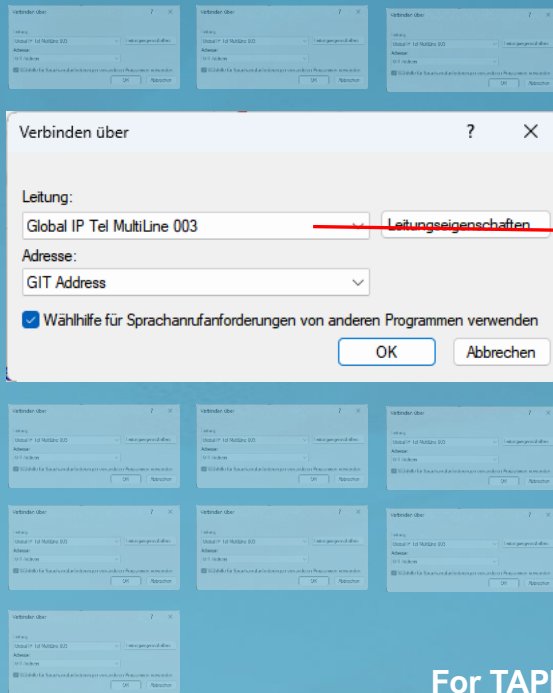
Users work via RDP (Remote Desktop) via a terminal server instance in the customer administration.
- Standard case for terminal server use -

TAPI server operation - Multiline

The same TSP provider is used for server operation as for the workstation. There are no functional differences. The connection is only established via TCP by storing an FQDN (Full Qualified Domain) or IP address.

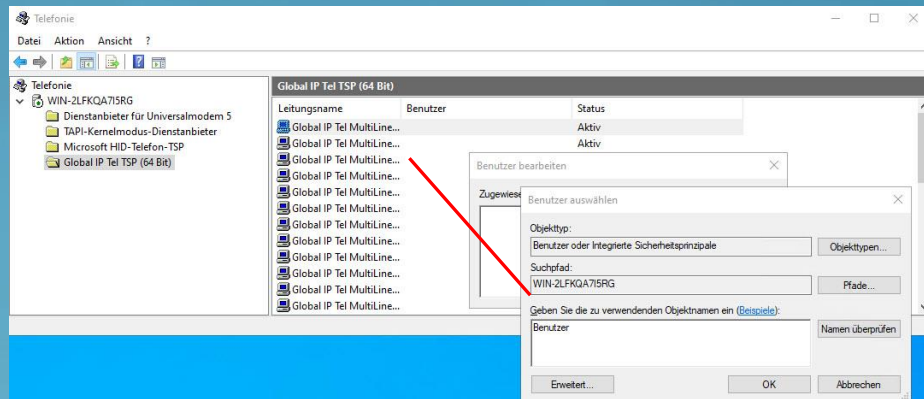


TAPI Multiline use



For TAPI applications with network installation, users are assigned "TAPI lines" in the TAPI application and in MIA. This line (communication channel) is the assignment identifier between the TAPI components (telephone / TSP / client). The numbering always starts with "0" and can be a maximum of 254 lines per server.

TAPI rights assignment terminal server



1. Log in to the terminal server with an admin user.
2. Open the rights management via the Run window (Windows key+R) or "Start | Run...".
3. In the window that now opens, enter "TapiMgmt.msc" and confirm the entry with the Enter key
4. Expand the view by clicking on the symbol (+ or arrow) next to the server host name to be configured.
5. Open the properties by clicking on the "Global IP Tel TSP (64bit)" entry.
6. Select the desired TSP line and open the rights settings with the right mouse button or by double-clicking.
7. Assign a desired user.

Administrators and local users can view all TSP lines of a terminal server. Assign a user account to each TSP line. Only then is the assigned TSP line visible and usable for the TS user.